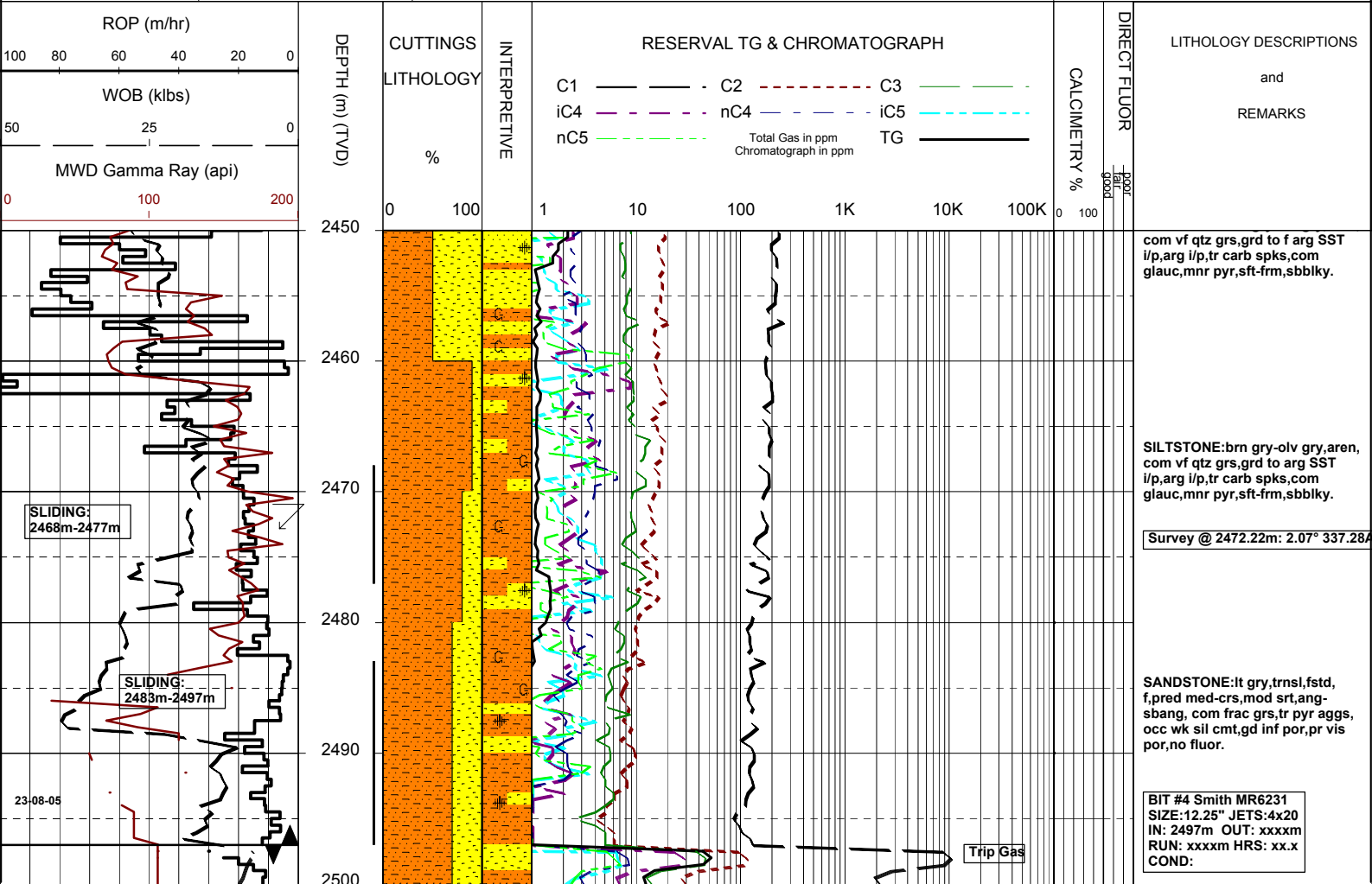


MASTERLOG BASKER 2

GENERAL	POSITION	HOLE / CASING INFO	DATE / DEPTH	ENGINEERS
Country : AUSTRALIA	Latitude : 38°17'58.51"S	17 1/2" Hole to (mMDRT): 1006	Spud Date : 14-08-2005	D. ADDERLEY
Permit : VIC RL6	Longitude : 148°42'24.72"E	12 1/4" Hole to (mMDRT) :	Total Depth Date :	A. DUNN
Field : BASKER	UTM Co-ord X (m E): 649251.9	8 1/2" Hole to (mMDRT) :	Total Depth (mMDRT):	S. RAJA
Basin : GIPPSLAND	UTM Co-ord Y (m N): 5759566	30" Conductor @ (mMDRT) : 208	True Vertical Depth (mTVDS):	
Well Type : APPRAISAL	RT to MSL (m): 21.5	13 3/8" Shoe @ (mMDRT) : 1000	Log Scale : 1/ 500	
Rig Name : Ocean Patriot	RT to Sea Bed (m): 174	9 5/8" Shoe @ (mMDRT) :	Final Status :	

ABBREVIATIONS	LITHOLOGY LEGEND	ENGINEERING LEGEND
MW Mud Weight FV Funnel Viscosity PV Plastic Viscosity YP Yield Point Gel Gel Strength WL Water Loss KCl Potassium Chloride Cl Chlorides Incl Inclination Az Azimuth	<p>WOB Weight on Bit (klbs) RPM Rotations Per Min FLW Flow Rate (gpm) SPP Pump Pressure (psi) RR Re-Run Bit TG Trip Gas CG Connection Gas BG Background Gas DGP Drilled Gas Peak MM Mud Motor</p> <p>Marl Clay, Sand Lime do. Shale ca. Shale sandy Shale si. Claystone</p> <p>Quartzite ar. Sandstone bitum. Shale (b) Claystone Fine SST sa. Shale</p> <p>Siltstone f to vf Sand f Fossils Algae Lithic Fragment Belemnits</p>	<p>Rudists Sponges Sporomorphs Tigillites Vertebrates Wood silicified</p> <p>Essai non concl Aucun fluide re TEST Test Filtrat Deviation curve Mud gain Boue</p> <p>Mud loss RFT FIT DST Cement</p>



31-08-05
WOB: 10-25 klbs
RPM: 240 (Surf+MM)
SPP: 3330-3550 psi
FLW: 925 gpm

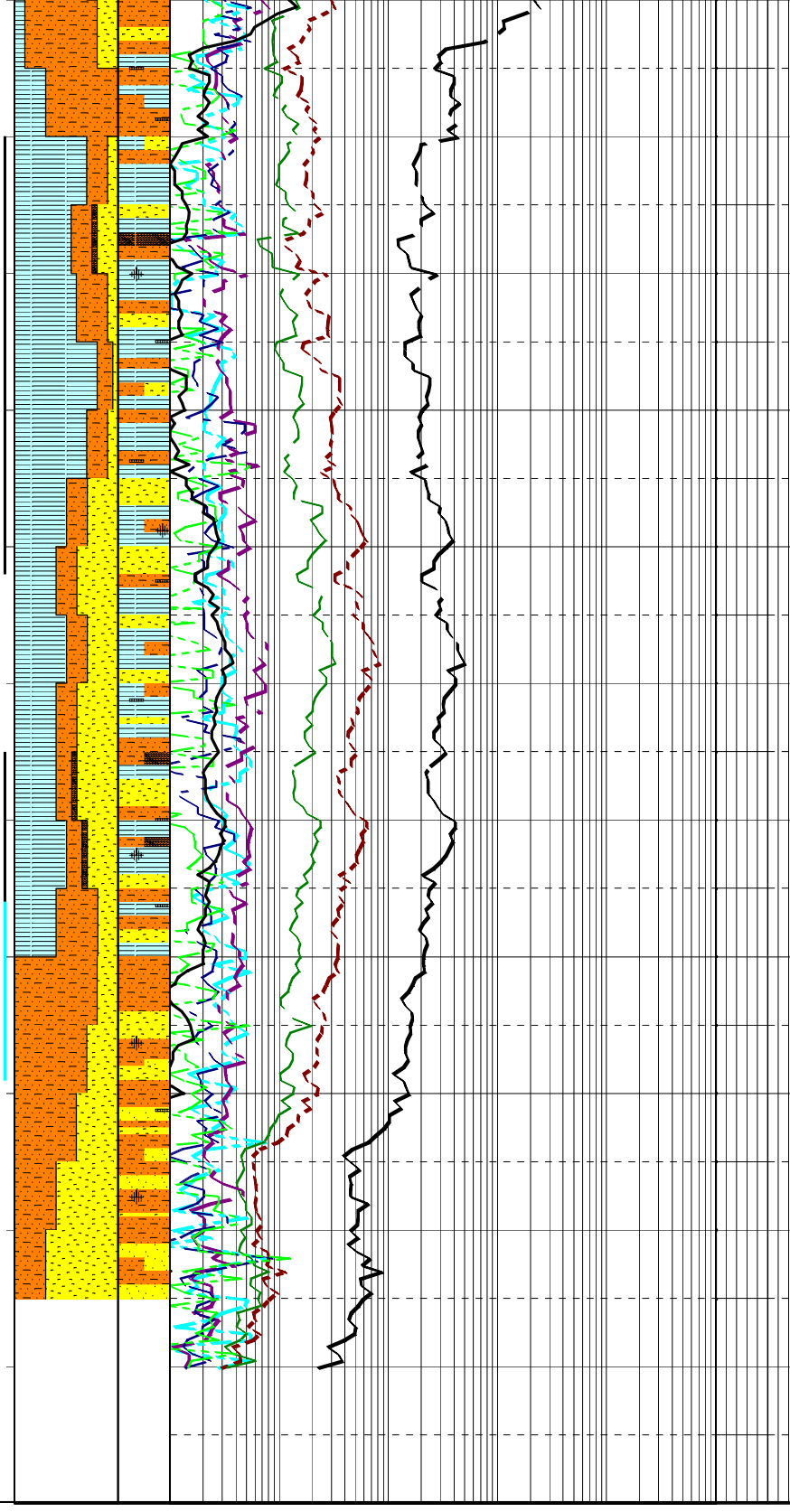
SLIDING:
2510m-2542m

SLIDING:
2555m-2564m

SLIDING:
2566m-XXXXm

WOB: 10-25 klbs
RPM: 240 (Surf+MM)
SPP: 3330-3550 psi
FLW: 925 gpm

2500
2510
2520
2530
2540
2550
2560
2570
2580
2590
2600
2610



SILTSTONE: olv gry-med gry, aren, tr carb spk, v sft-sft, tr frm-mod hd, tr disse pyr, tr pyr COAL frags, tr glauc i/p, amorph-sbbkly.

CLAYSTONE: olv gry-med gry, brn gry, slty grd to arg SLTST, occ carb spks & frags, tr calc, v sft-sft, amorph-sbbkly.

SANDSTONE: wh-off wh, clr, trnsi, mnr lt gry, vf-f occ med-crs, v pr srt, sbang-sbrnd, occ crs rnd, wk sil cmt, com wh arg mtx, tr gry slty mtx, tr carb spk & frag, lse, mnr fri, fr infpor, v pr vis por, no fluor.

CLAYSTONE: lt gry-olv gry, occ slty, tr aren, tr disse pyr, tr COAL frags, disp-frm, dom amorph, occ sbbkly, no fluor.

SANDSTONE: wh-off wh, clr, trnsi, f-med, occ crs-v crs, mod pr srt, sbang-rnd, wk sil cmt, loc com wh arg mtx, tr carb spks & frags, lse-fri, fr inf por, pr-fr vis por, no fluor.

CLAYSTONE: lt gry-olv gry, occ slty, tr disse pyr, occ COAL frags & spks, disp-v sft, amorph.

COAL: blk-brn blk, dll-ea, slty, brit-frm, sbfiss-sbbkly, unevn-ang i/p.

SILTSTONE: dk brn-olv blk, arg, tr aren, carb i/p, tr disse pyr, tr-mnr carb lams & frags, sft-frm, fri, blkly-sbfiss.

SANDSTONE: clr, trnsi, fstd, wh, v lt gry, vf-f, com v crs grns, sbang-sbrnd, mod srt, tr wk dol cmt, off wh kaol mtx, mnr carb lams, mnr pyr, ti vis por, fr inf por, tr dol fluor.

SILTSTONE: brn gry-brn blk, arg, tr aren, carb i/p, com carb lams, mnr pyr, sft-frm, sbbkly-sbfiss i/p.